

BRANCHING OUT



Photography by rfcreative.

HOME FILE

The home: An extensively renovated 1950s home in Malone, South Belfast.

Who lives here? Colin and Wesley.



Built in 1958, this substantial detached home in the leafy suburbs of South Belfast has recently undergone a huge extension and renovation project. No standard renovation, this essentially doubles the size of an already spacious interior. Adding three extra bedrooms and creating a fantastic open plan entertaining space to the rear, it's been given a new lease of life. As well as adding living and sleeping quarters, Colin and Wesley have modernised the original part of the house. Replastering, rewiring, reroofing and adding a new porch; you name it, it's been done. 'We'd been living in the house for a number of years and had a vision of how it could look. It was a once in a lifetime opportunity so we just went for it. We moved out and rented a property nearby for seven months while the work progressed,' says Colin.





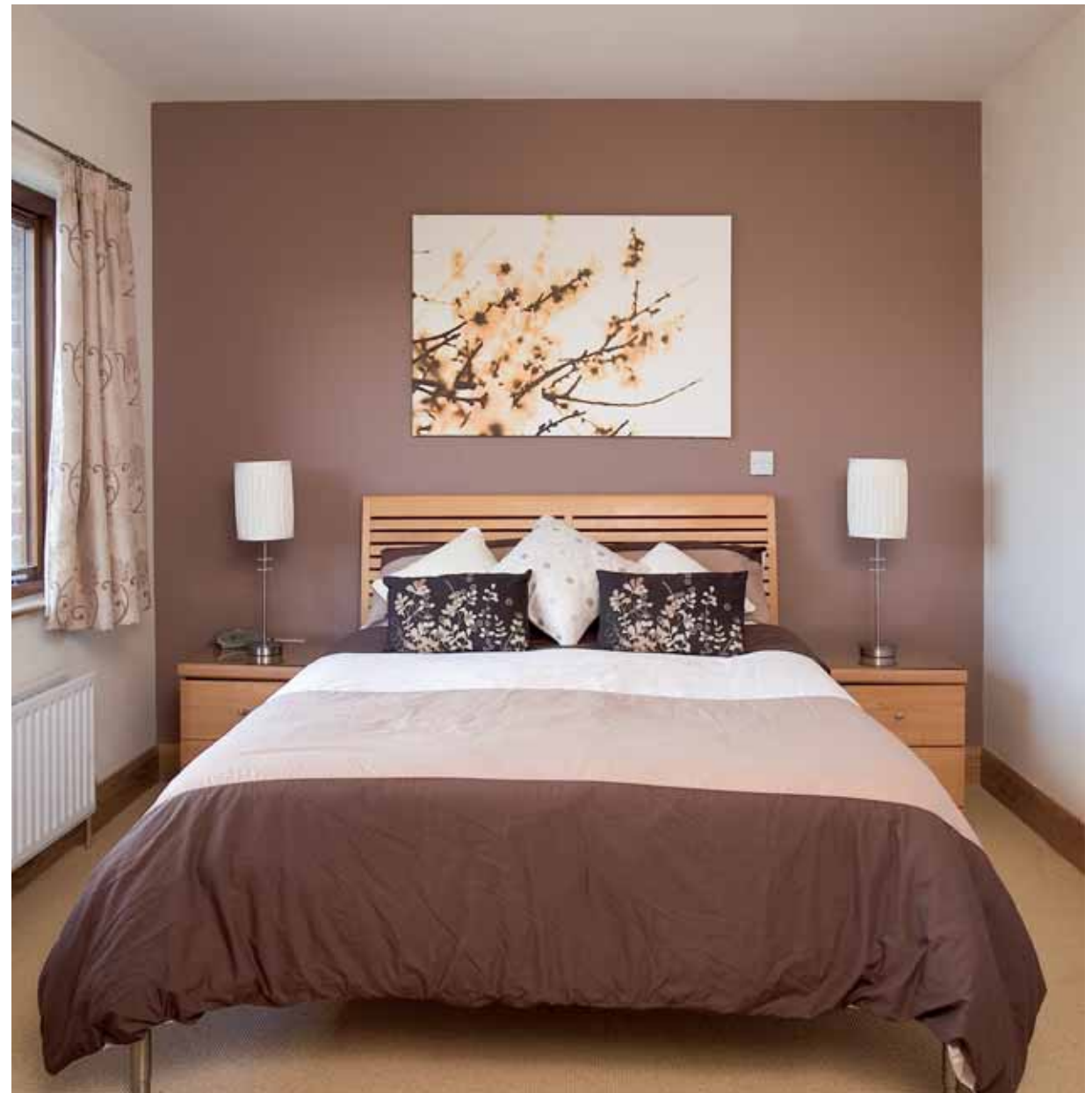
Employing architect firm HBK, Colin and Wesley soon began to see their dream home come together in the planning stages. 'The whole thing, from concept and drawings to build and completion went amazingly smoothly. We stayed in rented accommodation nearby, but not too close, otherwise we would've been too tempted to check progress every day. Instead we agreed to only visit the house once or twice a week.'

The pièce de résistance of the build has got to be the open plan area overlooking the gardens at the back. A state-of-the-art German Schüller kitchen creates a striking contemporary look. This cutting edge design, complemented by high shine porcelain tiles achieves a sharp, designer feel. A spacious area, there's more than ample room for casual lounging and double doors lead to the dining area, with another set of double doors through to the living room in the original footprint of the layout.



Iroko doors lead from both the kitchen and dining area onto an iroko deck and gardens beyond. 'This is our favourite part of the house; we spend almost all of our time here. Especially in the good weather, it's wonderful having the doors open onto the deck. It is lovely also to have the other living rooms at the front of the house. We use those rooms in the winter because they're smaller and more cosy, fitted with gas fires.'

Tiling has been selected for the majority of the flooring downstairs, while carpet is the soft underfoot choice for the bedrooms. Two bedrooms to the back of the



house have the advantage of garden views and a south-facing covered balcony. 'We like to sit on the balcony in the evening with a gin and tonic and enjoy the outlook. It's great to have an elevated area as well as the deck below.' The master bedroom has a contemporary en suite shower room, while the main bathroom benefits from both a shower and stylish freestanding bath. 'It was really difficult finding the right tiles for the bathrooms. We didn't want anything too light or too dark and wanted a contrast to the white sanitary ware. We got all the bathroom tiles from Porcelanosa, which we're delighted with.' The bath is also from Porcelanosa, while the shower is



from Beggs & Partners and all the other bathroom furniture came from The Bathroom People. Colin and Wesley have thought of everything in the design and layout of their home. 'It was so important to us that the house, not only look good but really work for us logistically. It certainly does – the en suite even has an infra red sensor lighting system so you don't need to think about switching on the light!

Colin and Wesley have added a whole new dimension to their home, achieving a stunning contemporary space with a high spec finish.